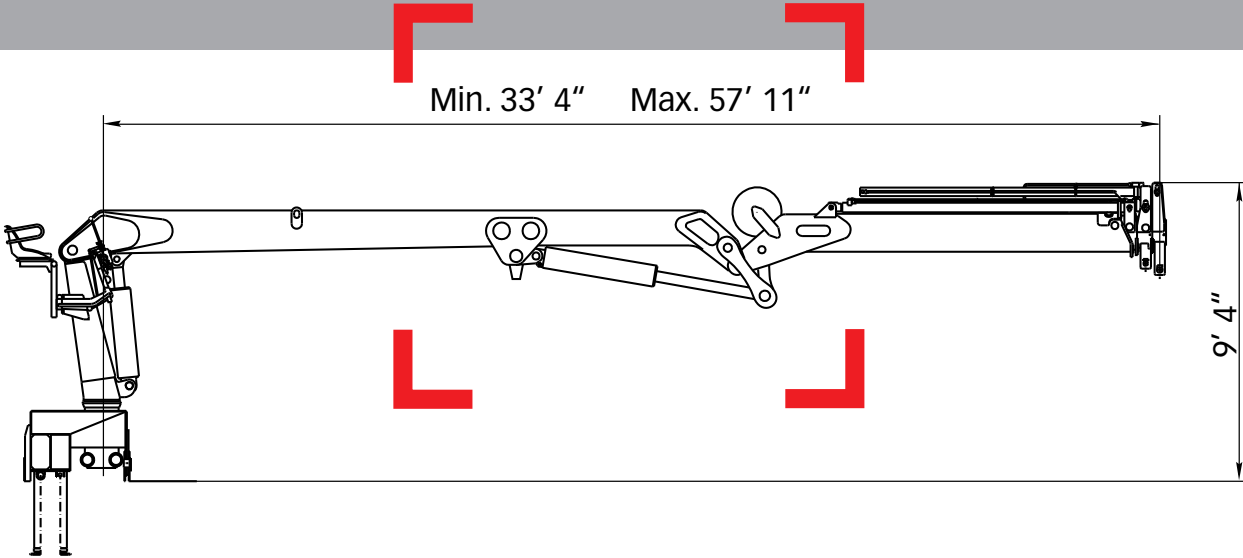


HIAB 210 K Capacity 133,000 ft-lbs



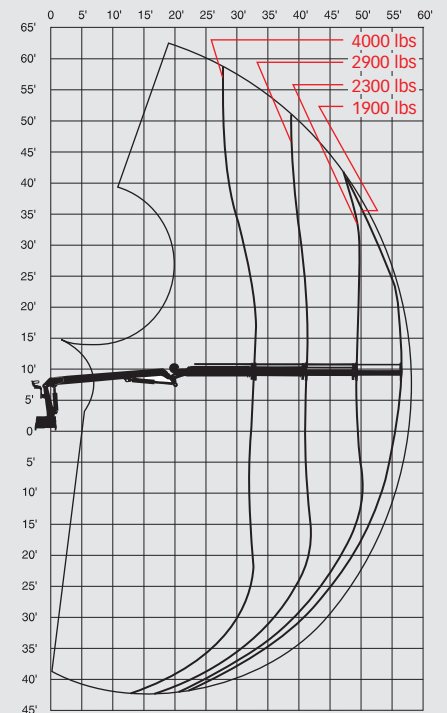
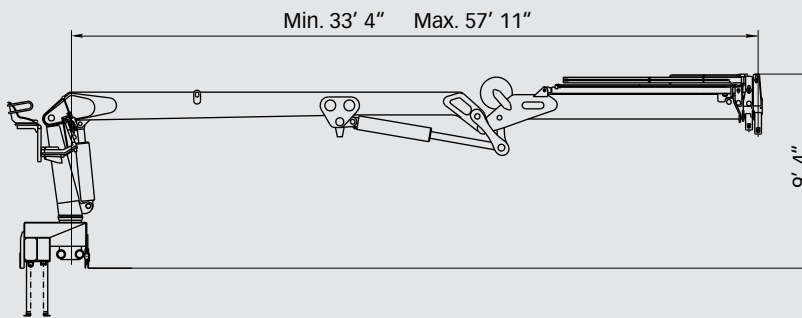
Basic data

HIAB 210 K Basic data

Technical data

| | K-2 | K-3 |
|---|---------------|----------------|
| Max. lifting capacity (ft.lbs) | 133397 | 110550 |
| Outreach - hydraulic extensions (ft) | 49' 3" | 47' 11" |
| Outreach - manual extensions (ft) | - | - |
| Outreach / Lifting capacity, standard (ft / lbs) | 32' 2" / 4500 | 32' 7" / 4000 |
| | 40' 4" / 3400 | 40' 9" / 2900 |
| | 48' 6" / 2750 | 48' 12" / 2300 |
| | - | 57' 2" / 1900 |
| Slewing angle | 450° | 450° |
| Height with horizontal boom (ft) | - | - |
| Installation space needed (ft) | 41" | 41" |
| Weight - "standard" crane without stabilizers (lbs) | 7716 | 8188 |
| Weight - stabilizer equipment (lbs) | 1285 | 1285 |

HIAB 210 K-3



Disclaimer

Hiab cranes has been built to meet the highest standards of safety and service life and has been thoroughly tested. Strength calculations for this model have been carried out in accordance with DIN 15018. Hiab's certified Quality Assurance System complies with the ISO 9001. Some of the items in our literature may be extra equipment. Certain applications may require an official permit. We reserve the right to change technical specifications without prior notice. Hiab cranes produced for EU-countries are CE-marked and comply with the European Standard EN 12999.



Calgary

8019 - 54th Street S.E.
Calgary AB T2C 4R7
1 (888) 843-6111

Edmonton

9410 - 51 Avenue N.W.
Edmonton, AB T6E 5A6
1 (866) 840-9365

info@arwtruck.com www.arwtruck.com