

# Hiab 210 K

## Capacity 133,000 ft-lbs (18 tm)



Product brochure



JIM'S CONCRETE

210K

ATLAS  
POLAR  
COMPANY LIMITED  
(416) 751-7740

JIM'S CONCRETE  
892-1654

YJ7-193

B

# For higher performance

## **Specially designed for the forming industry**

The Hiab 210 K is a heavy duty work horse that was specially built for handling the cages used in the concrete forming industry. The boom's geometry allows the operator to work straight out fully extended and unload cages from next to the crane. Throughout the hydraulic system JIC quick couplings are fitted, allowing fast and easy maintenance when needed. The Hiab Valve 91 provides the crane with extraordinary precision and speed. A high seat gives you supreme visibility. The Hiab 210 K will make your business even more profitable.

## **In-Line K-boom**

This non-foldable boom system has geometries that are ideally suited for meeting the demands of the building materials industries. It has an extra long inner boom and a short outer boom and extensions. The long inner boom provides faster moves from far out to close-in, giving greatly improved load cycle speed.

# Hiab 210 K Capacity 133,000 ft-lbs (18 tm)

## Front runners in boom design

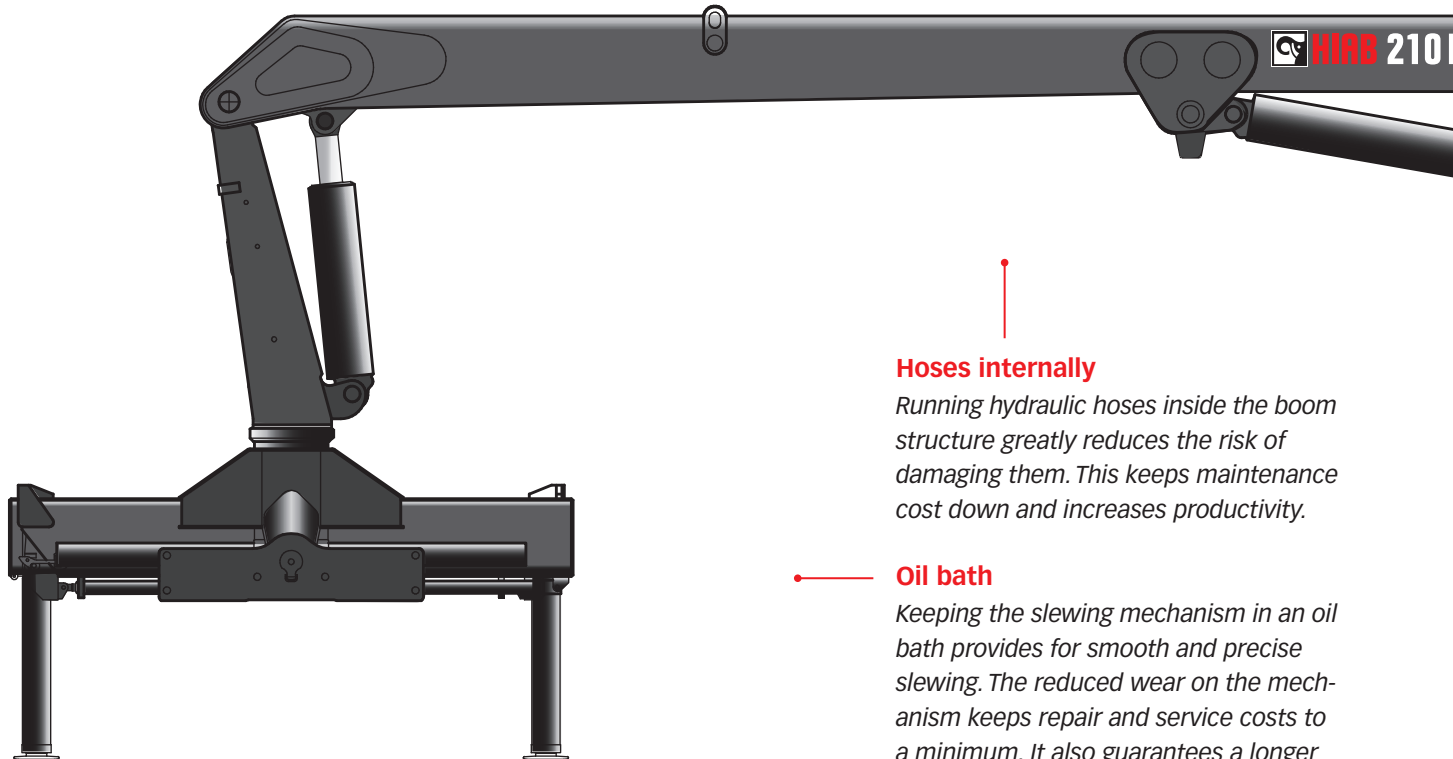
A Hiab crane is built to withstand extreme loading under all kinds of circumstances, in all field conditions. Keeping the boom reliable, tough and sturdy under extreme loading has made Hiab a world leader in crane boom engineering. Taking a closer look at the crane, one can point out a number of features that our customers benefit from.

## Hexagonal boom profile

The hexagonal profile used on Hiab booms is a ground-breaking design introduced by Hiab many years ago. It is now standard throughout the market of loader cranes. Even the smallest of Hiab cranes benefit from this design.

## In-Line K-boom

*The long inner boom gives faster loading and unloading of goods. It also enables higher lifting height close to the column.*



## Hoses internally

*Running hydraulic hoses inside the boom structure greatly reduces the risk of damaging them. This keeps maintenance cost down and increases productivity.*

## Oil bath

*Keeping the slewing mechanism in an oil bath provides for smooth and precise slewing. The reduced wear on the mechanism keeps repair and service costs to a minimum. It also guarantees a longer crane life.*

## Load-holding valve

*The load-holding valve enables you to lower loads without having to use engine power. This saves fuel, thereby lowering cost and noise levels. The built in hose-failure functionality also provides safety in the unlikely case that a hydraulic hose should burst.*

## High-torque slewing system

*A heavy-duty, high-torque slewing system ensures safe and efficient operation even on inclines or slopes.*

### Hexagonal boom profile

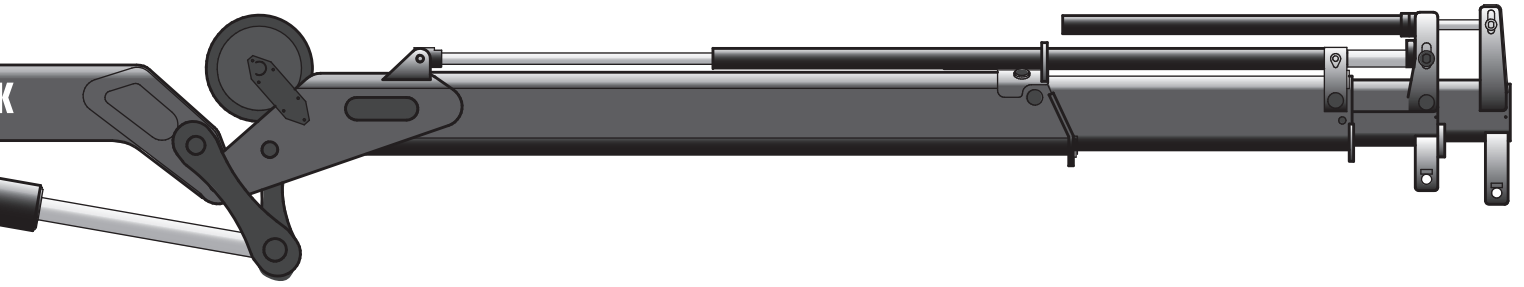
The hexagonal profile ensures the boom is always in perfect balance, due to its shape and big support surface. The profile also minimizes boom deflection. This reduces maintenance costs and increases efficiency.

### Side supports for stability

The side supports greatly improve the performance when for example excavating or performing other high-stress tasks.

### In-line design

The In-Line K-boom provides the possibility to park the crane in the small space between stacked forming cages. This increases the payload possible to load on your truck.



### JIC couplings

JIC couplings are standard on most Hiab cranes. They assure secure coupling easily, and are still very easy to disconnect for service.

### Large slide pads

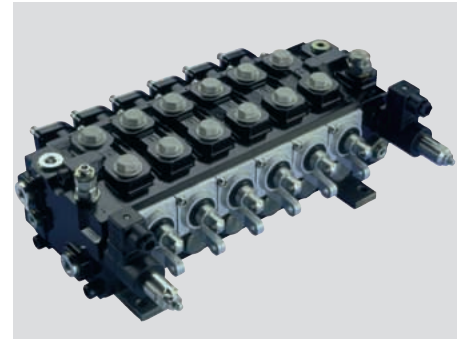
The hexagonal profile enables the use of larger slide pads. This makes the extensions move smoother and reduces mechanical wear on the boom.

### Valve 91

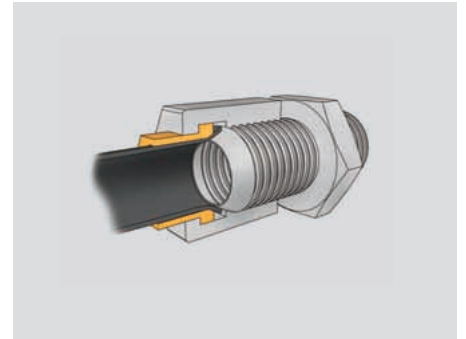
The Hiab Valve 91 represents the pinnacle of hydraulic valve technology. It is load-sensing and pressure compensated which improves both speed and precision. It features a long range of top class abilities, among one is that the same control lever movement always produces the same crane response, whether you are using one or more functions, with light or heavy load. This keeps the lifting and other crane functions running simultaneously at the same relative speed. The Hiab Valve 91 gives your crane the ability to be controlled with fingertip precision regardless of how far out the crane tip is, invaluable in confined spaces.

### JIC couplings

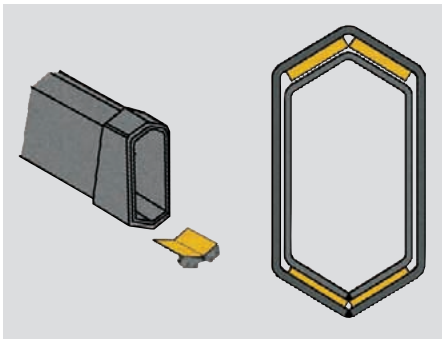
With JIC couplings the time it takes to service a crane is shorter. No additional parts or packings are needed, leading to secure coupling with mechanical tightening only. The service intervals are longer, keeping maintenance costs down.



Valve 91



JIC couplings



### Large slide pads

*Large slide pads reduce friction and wear keeping maintenance costs low. Also the Hiab boom systems needs no greasing, and thus it is kept cleaner than those of our competitors'.*



### High seat (optional)

*A high seat provides an excellent view, which minimizes the danger resulting from blind angles. Positioned in the high seat the operator is also at a very safe position. Levers mounted directly onto the control valve gives a superb feel of the load.*



CRETE

50

ATLAS  
POLAR  
COMPANY LIMITED  
416) 751-7740

JIM'S CONCRETE  
892-1654



**Calgary**

8019 - 54th Street S.E.  
Calgary AB T2C 4R7  
**1 (888) 843-6111**

**Edmonton**

9410 - 51 Avenue N.W.  
Edmonton, AB T6E 5A6  
**1 (866) 840-9365**

info@arwtruck.com    www.arwtruck.com